

# STRAIGHT SLIDING 305

E A C H D O O R W E I G H T 7 0 0 k g

## APPLICATION

- ▶ Widely used in commercial, industrial and agricultural applications where robust gear is required.
- ▶ To cover any width of opening, any number of doors can be used on single or multiple lines of track.
- ▶ To accommodate different building designs, doors can slide to one or both sides.
- ▶ A wicket door for easy access may be incorporated into a sliding door.
- ▶ Where doors are fitted externally, a canopy is recommended.
- ▶ Suitable for Fire Resistant applications, see Data Sheet 'Straight Sliding Fire Door 301 and 305'.

## DOOR SPECIFICATION

<b>Track</b>	<b>305</b>
For individual doors:	
Max Door Height	4800mm
Max Door Weight Steel Hanger	700 kg
Door Thickness	43-57mm

For ease of operation it is recommended that the door width should not exceed 75% of door height. Timber doors for interior use can be of flush construction or glazed.

Timber doors for industrial applications should be framed, ledged and braced.

Metal doors should be constructed of channel or angle framing, well braced and clad with flat or comugated sheets.

## GEAR SPECIFICATION

<b>Track:</b>	305 (3mm thickness)
Material:	galvanised steel
Standard lengths:	1800mm, 2000mm, 2500 mm, 3000mm, 4000mm and 6000mm

### Brackets:-

For single track (face fixing)	1A/305	aluminium alloy pressure die casting
For double track (face fixing)	5/305	aluminium alloy pressure die casting
For single track (soffit fixing)	3A/305	aluminium alloy pressure die casting
Fix at every 900mm centres (maximum).		

### Hangers 2 per door:-

Wood Doors - apron fixing	53C/S
Wood Doors - angle plate fixing	52C/S
Wood Doors - concealed fixing	57C/S
Metal Doors - angle frame	56C/S
Metal Doors - box frame	56CX/S
Metal Doors - concealed fixing	57C/S

Hangers are fitted with steel wheels on maintenance free sealed for life precision ball bearings. Vertical adjustment is simple and positive.

### Guides:-

Wood Doors	102/97
Wood Doors - concealed fixing	106R/97
Metal Doors - angle frame	104P/97
Metal Doors - box frame	104PX/97

All steel parts are electro-zinc plated.

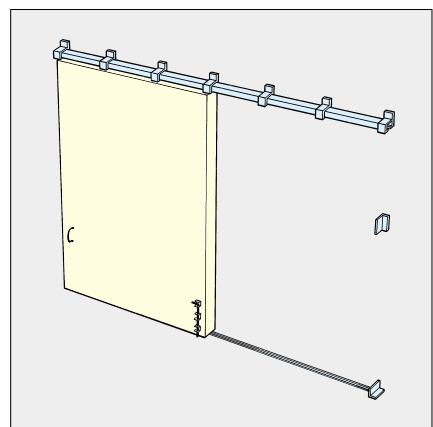
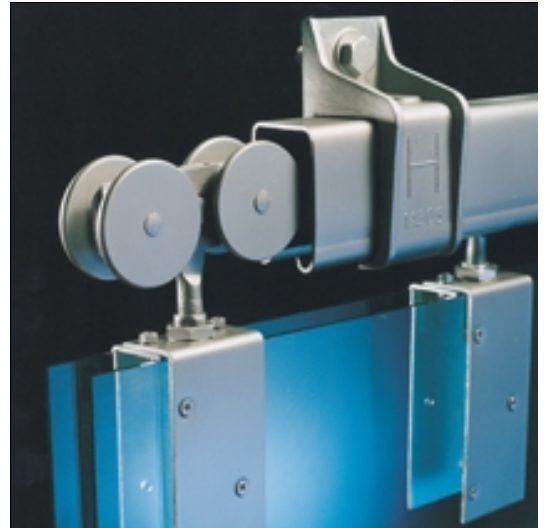
<b>Channel:</b>	97	galvanised steel
-----------------	----	------------------

Standard lengths correspond with standard track lengths.

Pre-drilled for lugging into concrete and for use with drainage funnel.

**Accessories:** Bow Handles, Flush Pulls, Bolts and Locks.

## STRAIGHT SLIDING TOP HUNG TIMBER OR METAL DOORS



Standard Application

# STRAIGHT SLIDING 305

